

## Soil Micromorphology of Gibraltar Coprolites (Macphail and Goldberg)

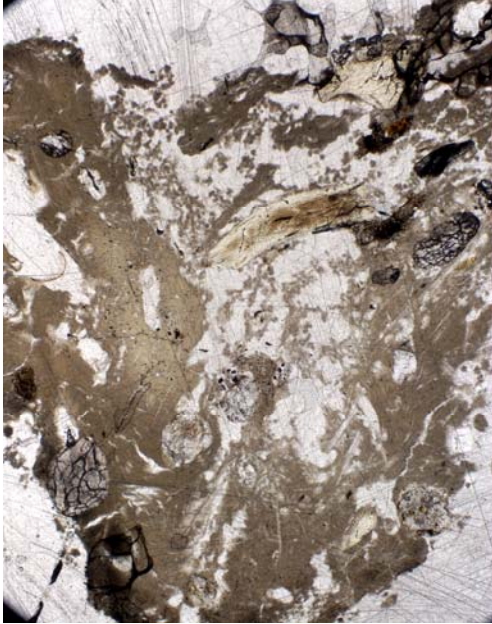


Figure 1. Sample Van 371. Likely wolf coprolite, showing fragment of bone (upper-centre) and biological burrowing (center). PPL; length of field ca. 7 mm.



Figure 2. Sample Van 371. As in Fig. 1 but showing curved tubular voids from fur inclusions. PPL; length of field ca. 7 mm.



Figure 3. Sample Van 371. Bone (upper) and mineral inclusions. PPL; length of field ca. 3.50 mm.

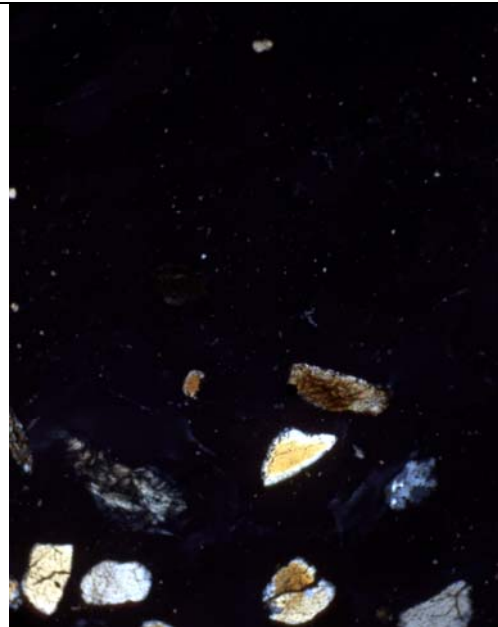


Figure 4. Sample Van 371. As Figure 3 but XPL, showing isotropic nature of matrix and included quartz sand; length of field ca. 3.50 mm.



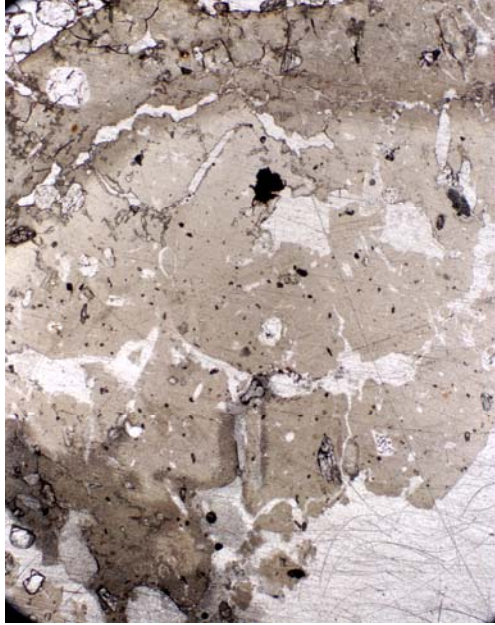


Figure 5. Sample Gor 157. Hyaena coprolite showing darker edge and pale centre. PPL; length of field ca. 7 mm.

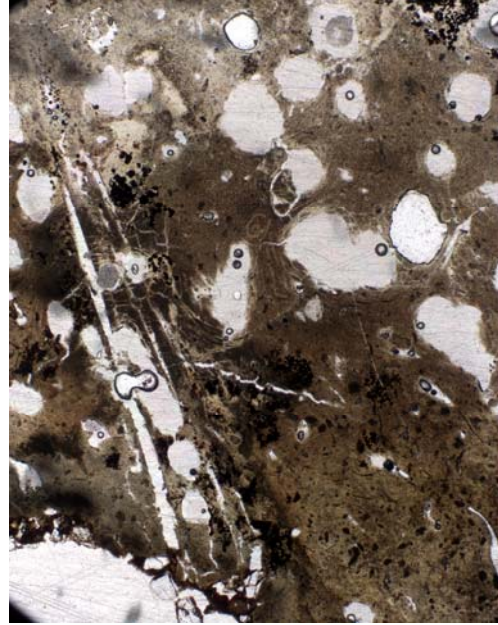


Figure 6. Sample Gor 179. Hyaena coprolite with vesicular porosity. PPL; length of field ca. 7 mm.

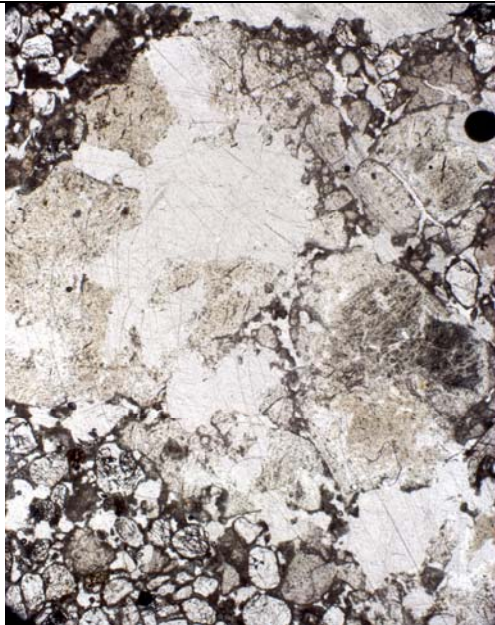


Figure 7. Sample Gor 185. Partially micritised hyaena coprolite surrounded by quartz sand. PPL; length of field ca. 7 mm.

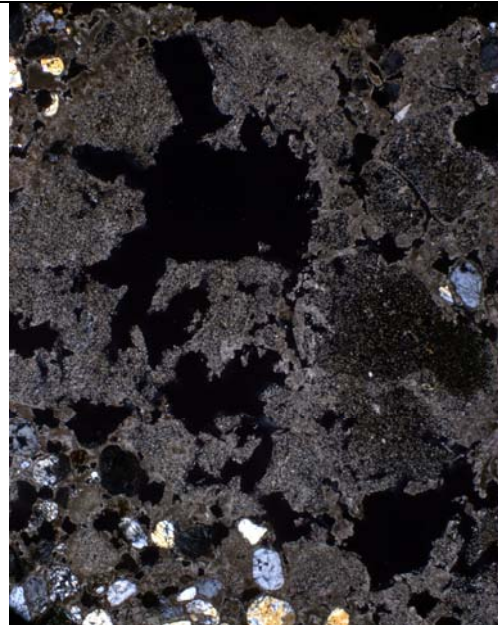


Figure 8. Sample Gor 185. Same as Figure 7. XPL; length of field ca. 7 mm.